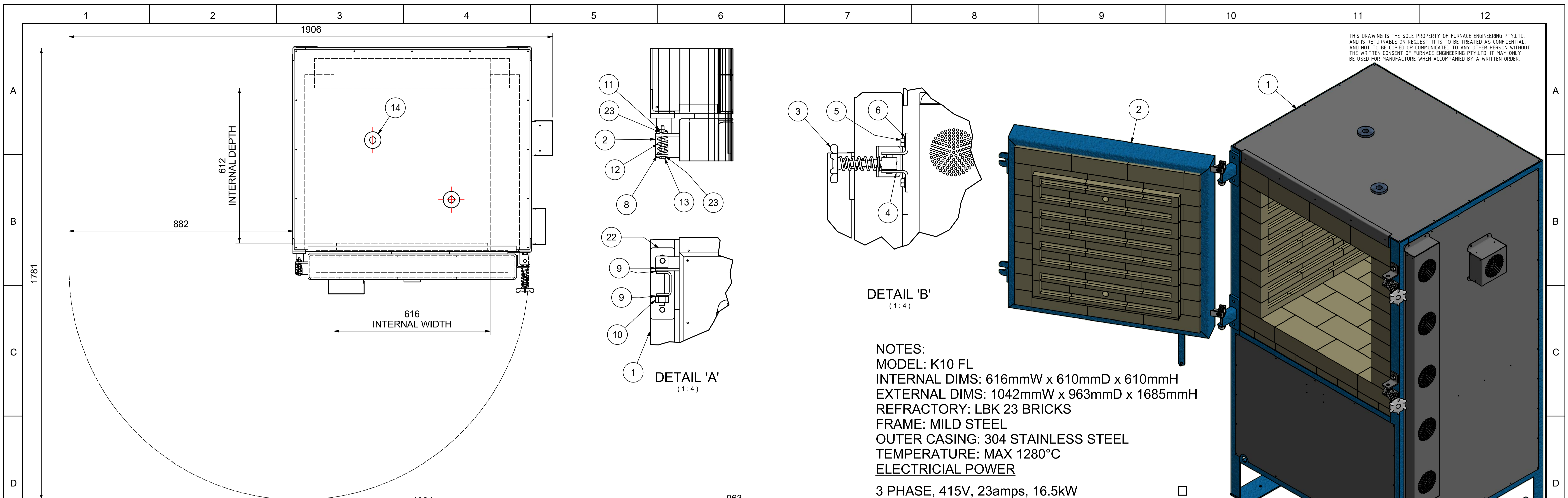
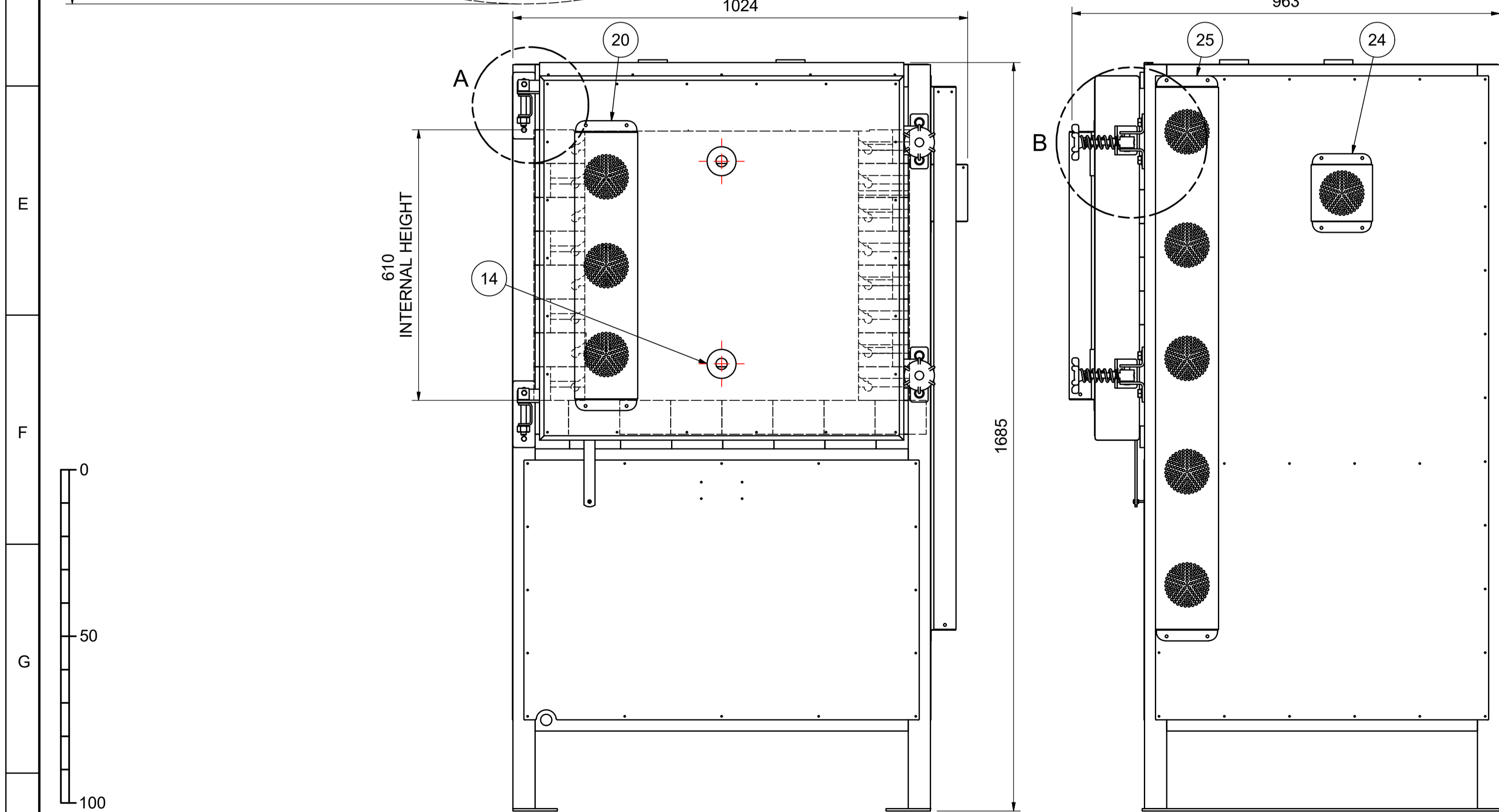


THIS DRAWING IS THE SOLE PROPERTY OF FURNACE ENGINEERING PTY.LTD. AND IS RETURNABLE ON REQUEST. IT IS TO BE TREATED AS CONFIDENTIAL, AND NOT TO BE COPIED OR COMMUNICATED TO ANY OTHER PERSON WITHOUT THE WRITTEN CONSENT OF FURNACE ENGINEERING PTY.LTD. IT MAY ONLY BE USED FOR MANUFACTURE WHEN ACCOMPANIED BY A WRITTEN ORDER.



**NOTES:**  
 MODEL: K10 FL  
 INTERNAL DIMS: 616mmW x 610mmD x 610mmH  
 EXTERNAL DIMS: 1042mmW x 963mmD x 1685mmH  
 REFRACTORY: L BK 23 BRICKS  
 FRAME: MILD STEEL  
 OUTER CASING: 304 STAINLESS STEEL  
 TEMPERATURE: MAX 1280°C  
 ELECTRICAL POWER

- 3 PHASE, 415V, 23amps, 16.5kW
- KILN PROGRAM
- 1 - PROGRAMMER FITTING
- 2 - SR 92
- 3 - STAFFORD
- ADDITIONAL OPTIONS
- 1 - ROOF VENT SYSTEM
- 2 - FLOOR VENT SYSTEM
- FOR ADDITIONAL OPTIONS - REFER TO SEPERATE DRAWINGS



Parts List				
ITEM	QTY	DESCRIPTION	MATERIAL	PART No. DRAWING No.
1	1	KILN		K10 FL/002
2	1	DOOR		K10 FL/005
3	2	SCREW HANDLE ASSEMBLY		TET-K 0032 TET-K 0019
4	4	Front Load Handle Boss Mount Angle	304 SS	
5	4	M10 x 20 Hex Hd Bolt Gr 4.6 Z/P	M.S	
6	4	M10 FLAT WASHER	M.S	
8	2	SMALL DOOR HINGE BOLT ASSEMBLY		TET-K 0027 TET-K 0027
9	6	BRASS FLAT WASHER 1/2" ID, 1" OD, 16 GAUGE	Brass	TET-K-0033 TET-K 0033
10	2	M16 Hex Nut Gr 5 Z/P	M.S	
11	2	M6 Hex Nut Gr 5 Z/P	M.S	
12	2	Small Spring	M.S	TET-K 0023 TET-K 0023
13	2	M6 x 65 Hex Hd Bolt Gr 4.6 Z/P	M.S	
14	4	PLUG HOLDER LONG		TET-K 0007 TET-K 0007
20	1	ELEMENT COVER		K10 FL/008
22	2	HINGED DOOR BRACKET		K10 FL/006
23	4	M6 Flat Washer	M.S	
24	1	THERMOCOUPLE COVER		K10 FL/008
25	1	ELEMENT COVER		K10 FL/008

NO		DESCRIPTION	REV BY	DATE	APPR BY	WELD NOTES		GENERAL NOTES		SURFACE FINISH		TOLERANCES		THIRD ANG. PROJ.		TETLOW		TETLOW KILNS & FURNACES A.B.N. 26 166 832 3000 54		A1	
A		ORIGINAL RELEASE - NOT FOR MANUFACTURE	C.H.	21 APR 20	T.N.	1. CARBON STEEL STRUCTURAL WELDING TO AS 1554.1 G.P. WITH 100% VISUAL EXAMINATION, 5% VISUAL INSPECTION U.N.O.		1. ALL ROLLED STEEL SECTIONS TO BE IN ACCORDANCE WITH AS3679.1-300 AND CURRENT BHP STRUCTURAL SHAPES		NO. MIC		AS 1100		THIRD ANG. PROJ.		DESIGNED: C.HILLIER		K10 FL KILN		DRG. NO.	
B		RELEASED FOR MANUFACTURE	C.H.	21 APR 20	T.N.	2. STAINLESS STEEL STRUCTURAL WELDING TO AS 1554.6 CATEGORY 2, CLASS C, SURFACE FINISH III WITH 100% VISUAL SCANNING, 5% VISUAL EXAMINATION U.N.O.		2. ALL RHS & CHS TO BE GRADE 350 TO AS1163		25um		MAX. CLA		AUST STD AS1100		DRAWN: C.HILLIER		GENERAL ARRANGEMENT		SHT. NO	
C		ADDED ARCH OF DOOR	C.H.	14 SEPT 20	T.N.	3. ALL WELDS TO BE CONTINUOUS 0.7 x MIN. PLATE THICKNESS U.N.O.		3. ALL BOLTS AND NUTS TO BE IN ACCORDANCE WITH AS1111,AS1112, AS1110,AS1252 UNLESS OTHERWISE NOTED.		1.6um		EQV		DATE: 21/04/2020		CHECKED: D.BOISSEZON		K10 FL/001		REV	
						4. WELD DETAILS COVERED BY NOTES 1, 2 & 3 ARE NOT SHOWN ON THE DRAWING		4. DO NOT SCALE		6.3um				APPROVED: T.NASH		SCALE: 1:7.5		CLIENT		1 of 1	
						5. CARBON STEEL WELDING CONSUMABLES TO AS 1554.1 SECTION 2.3				1.6um										C	
						6. STAINLESS STEEL WELDING CONSUMABLES TO AS 1554.6 SECTION 2.3															
						7. ELECTRODE SELECTION AS PER AS 1554.6 TABLE 4.5.1 U.N.O.															

©COPYRIGHT FURNACE ENGINEERING 2020